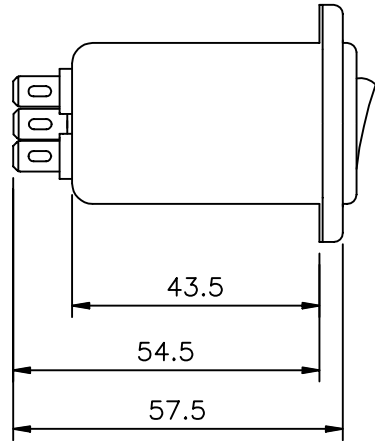
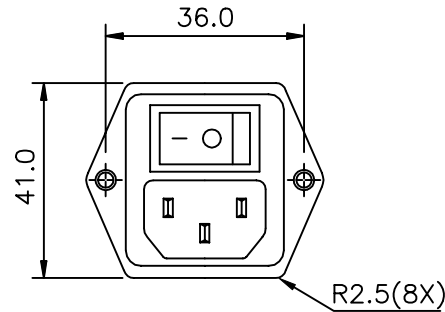
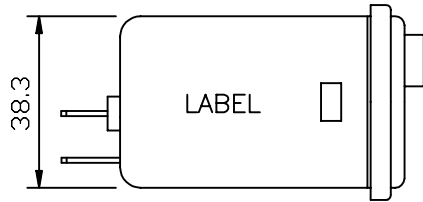
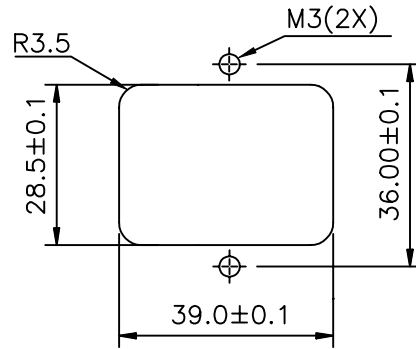


Rev.	Description	Date	Approved

MECHANICAL DIMENSIONS :



SUGGESTED MOUNTING CUTOUT



1. ELECTRICAL CHARACTERISTICS:

- 1-1. VOLTAGE RATING 115/250V
- 1-2. CURRENT RATING
 - A. AT 115VAC 3 A RMS Max.
 - B. AT 250VAC 3 A RMS Max.
- 1-3. OPERATING FREQUENCY..... 50/60 Hz
- 1-4. LEAKAGE CURRENT: EACH LINE TO GROUND
 - A. @115VAC 60Hz 0.20 mA MAX.
 - B. @250VAC 50Hz 0.40 mA MAX.

1-5. HIPOT RATING (FOR ONE MINUTE)

- A. LINE TO GROUND 2250 VDC
- B. LINE TO LINE 1450 VDC

1-6. MINIMUM INSERTION LOSS IN dB:

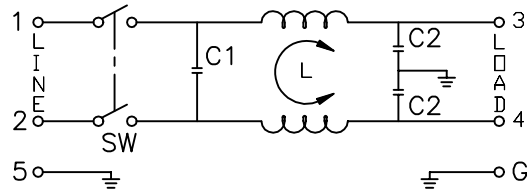
FREQ. MHz	.01	.05	.10	.15	.50	1.0	5.0	10	30
COM. MODE dB	/	/	/	20	30	35	35	35	35
DIF. MODE dB	/	/	/	4	10	20	35	35	40

1-7. OPERATING TEMPERATURE:-25°C TO +85°C

1-8. AMBIENT TEMPERATURE:40°C

1-9. SAFETY :

ELECTRICAL SCHEMATIC :



L : 2.4 mH
 C1 : 0.1 uF
 C2 : 2200 pF

Dim range (mm)	Tolerance +/- (mm)	Qualtek Electronics Corp. PPC DIVISION		
		Part Number: 860-03/008		
0-1	0.15	Description: EMI FILTER		
1-6	0.20			
6-18	0.30		Rev A	UNIT : mm.
18-50	0.50			
50-120	0.70	Drawn/Date	Checked/Date	Approved/Date
120-250	0.90	B.ZHANG 05-17-04	D/05-17-04	JJH/05-17-04
250-500	1.20			